



Johannes Brahms

1833-1897

SERENADE NR. 2

Op.16

1859

für kleines Orchester

Flöte II

Johannes Brahms

1833-1897

SERENADE NR. 2

Op.16

Flöte II

Table of contents

I - Allergo moderato	1
II - Scherzo - Vivace	4
III - Adagio non troppo	5
IV - Quasi menuetto	6
V - Rondo - Allegro	7

Editorial remarks are added within parentheses

*Typeset with LilyPond, a free software under GNU General Public License
Source & scores available on <http://www.espace-midi.com/lilypond>*

Flöte II

104 Flöte I

112 *p*

113 **C** Klarinette I

129 *p*

130

136 *f*

137

143 *ff*

144 **D** Klarinette I

161 *p* *cresc.*

162

169 *f*

170

176 *ff* *p*

177 Oboe I

191 *ff*

192

199 *p*

Flöte II

205

dim.

217 **E**

p

Fag. I, Br. 24

250

(p) *p cresc.* *sempre cresc.* - - - -

259

- *f*

267 **F**

p

Klarinette I 13

287

p

5 Oboe I

299

p dolce *p*

308 **G**

dim.

Oboe I 31

352

p *cresc.* - - - -

362

f *p* *pp*

Flöte II

Adagio non troppo

Flöte II

Bratsche

cresc.

f

dim.

pp

ff

ff

f

f

p

f

p cresc.

f

Flöte I

Horn I

Vlc.

Fagott I

pp

Measures 8, 12, 16, 22, 28, 44, 64, 68, 73 are indicated at the start of their respective staves. Rehearsal marks A, B, and C are present above measures 30, 48, and 73 respectively. Performance markings include *cresc.*, *f*, *dim.*, *pp*, *ff*, *p*, *p cresc.*, and *pp* with dynamic wedges. Fingerings 1, 2, 7, 8, 12, 15 are indicated. The score is in treble clef with a key signature of two flats (B-flat and E-flat).

Flöte II

Quasi Menuetto

Flöte II

6 Klar. I Fag. I 1. Klar. I 2. Br. Pizz. Fag. I Klar. I Br. *p dolce*

11

17 *dim.* Oboe I *rf*

27 *rf p*

33 **Trio** 1 *p*

40 2 1 *mf p*

48 *p (> <)* 3

58 *cresc.*

64 *f p* 3 1

72 1 1 2 1

80 *f p < >* 1

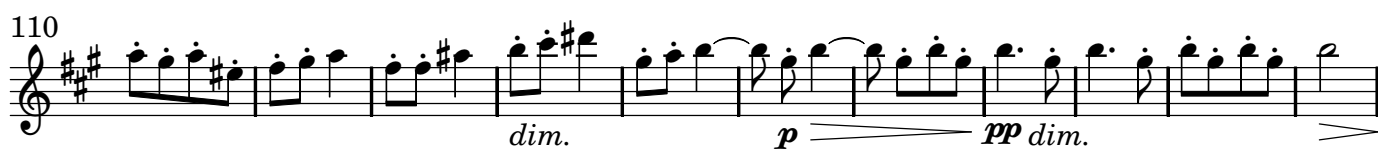
Flöte II

*Menuetto da Capo senza replica
sin'al ϕ e poi la Coda*



**Rondo
Allegro**

Flöte II



Flöte II

121 **19** Flöte I **C** Oboe I **6** *f* *ff* *p*

154 *p*

164 Oboe I **20** *mf cresc.*

192 *f*

201 **D** *p* *pp* **1** **2** **2**

213 *cresc.*

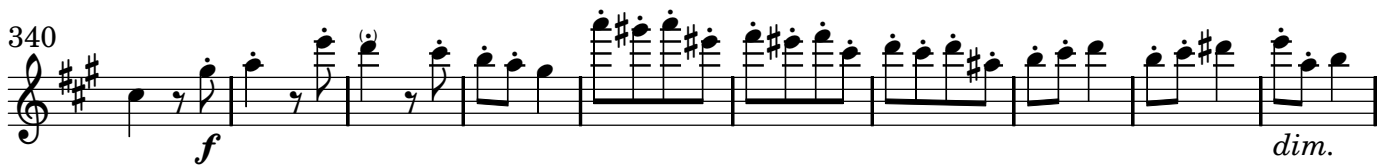
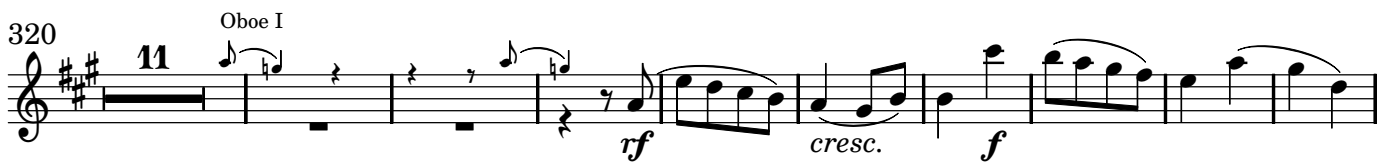
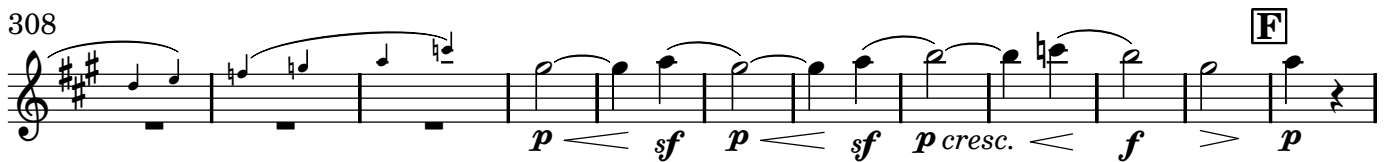
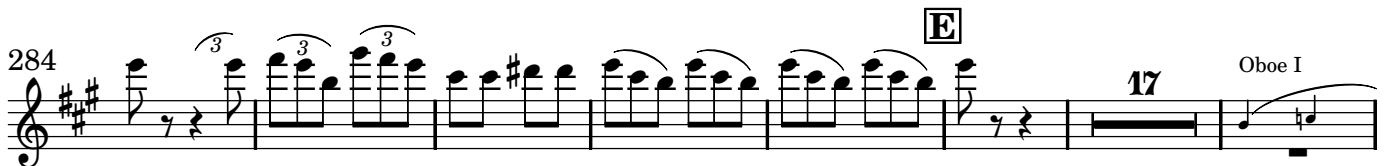
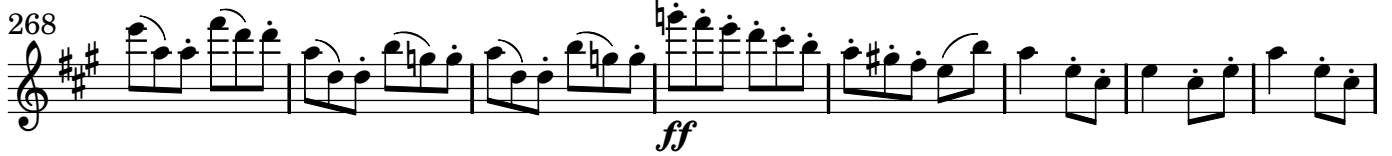
225 **6** Oboe I *f* *mf cresc.*

239 *ff*

248 *ff*

256 *tr* *tr* **5** **3** **4** *f cresc.*

Flöte II



This music has been typeset and placed in the public domain by J.F. Lucarelli

<http://www.espace-midi.com>

Unrestricted modification and redistribution is permitted and encouraged

copy this music and share it!

Send comments or remarks to j-f.lucarelli@espace-midi.com

Engraved with LilyPond 2.14.2 <http://www.LilyPond.org>